

## About the Meeting

### Continuing Education/Professional Development

The conference provides high quality technical sessions and a field trip that is relevant to Certified Professionals in Erosion and Sediment Control, Certified Crop Advisors, Landscape Architects, Professional Geologists, and Professional Engineers.

### Conference Registration

Please register for the conference at your earliest convenience. The registration fee covers all meetings and scheduled events.

### Exhibits and Sponsorships

Exhibit and sponsorship opportunities are available. Contact Earl Norton for additional information at 334-728-4107 or [earl\\_norton@yahoo.com](mailto:earl_norton@yahoo.com).

### Meeting Location

The 2009 Alabama SWCS Annual Meeting will be held at the Doubletree Hotel, 808 South 20th St. at 8th Ave., Birmingham, AL 35205.

### Hotel Reservations

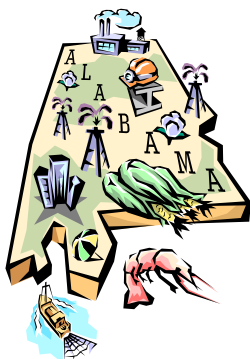
for your stay during the meeting may be made by contacting the Doubletree Hotel - Phone Number: 205-933-9000. The lodging room rate is \$94 per night. Free parking in the hotel parking deck for meeting registrants. The hotel is located near UAB and the Five Points Area. Be sure to indicate that you are attending the Alabama SWCS Annual Meeting.

### **Deadline for hotel reservations is**

**May 22, 2009.** Reservations made after this date are subject to a price increase at the hotel's discretion.

### Questions?

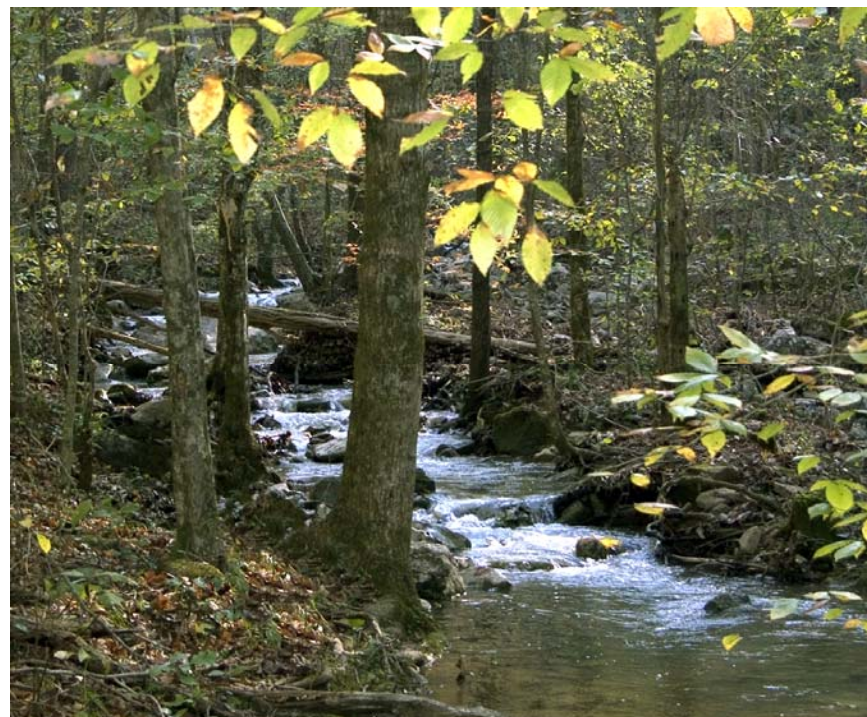
Contact **Perry Oakes** at 334-887-4536 or **Earl Norton** at 334-728-4107, for more information about the meeting.



### **Co-Sponsors Include:**

**Southeast Chapter of International Erosion Control Association**  
**USDA-Natural Resources Conservation Service**  
**USDA-Agricultural Research Service**

# Alabama Soil and Water Conservation Society Annual Meeting



**Energy and Water Development for Alabama**  
**(Managing Our Natural Resources for the Future)**

**June 10-12, 2009**

**Doubletree Hotel**  
**808 South 20th Street**  
**Birmingham, Alabama 35205**

*Energy and Water Development for Alabama* is the theme of the 2009 Alabama Soil and Water Conservation Society Annual Meeting. Alabama and other Southeastern states are poised for major development in bioenergy production due to our abundant resources (bio-mass and water). Proper planning and implementation must occur so the natural resources of the state will meet the energy and water needs while remaining sustainable. This conference will take a close look at our natural resources and see how the state is positioning itself for bioenergy production.

We hope this conference will help us understand some of these important and complex processes, so we can make the best use of our resources while at the same time protecting them.

### Program Overview

Major topics that will be featured during the conference are:

- Forestry products for bioenergy production.
- Agricultural products for bioenergy production.
- Alabama's infrastructure development for bioenergy.
- Bioenergy initiatives in the state.
- Alabama's water management plan for bioenergy.



### Schedule of Events

#### Wednesday, June 10

8:00 a.m. - 10:00 a.m. .... Exhibitor Set-Up  
 10:00 a.m. - 1:00 p.m. .... Registration  
 1:00 p.m. - 5:00 p.m. .... Opening Session/Exhibits/Silent Auction  
 5:15 p.m. .... Reception with Exhibitors

#### Thursday, June 11

7:30 a.m. - 8:30 a.m. .... Registration/Exhibits/Silent Auction  
 8:30 a.m. - 4:40 p.m. .... Field Tour  
 4:45 p.m. - 5:30 p.m. .... Committee Meetings/Exhibits/Silent Auction  
 6:30 p.m. .... Dinner

#### Friday, June 12

7:00 a.m. - 8:00 a.m. .... Registration/Exhibits/Silent Auction  
 8:00 a.m. - 10:00 a.m. .... Business Meeting  
 10:00 a.m. - Noon .... Technical Sessions

Check out our website:  
<http://www.alchapterswcs.aces.edu/>

## Energy and Water Development for Alabama (Managing Our Natural Resources for the Future)

### Registration Form

Name: \_\_\_\_\_  
 Organization/Company: \_\_\_\_\_  
 Address: \_\_\_\_\_  
 City: \_\_\_\_\_ State: \_\_\_\_\_ Zip: \_\_\_\_\_  
 Phone: \_\_\_\_\_ E-mail: \_\_\_\_\_

Category	Cut-off Date	Member	Non-Member	Special	Enclosed
<b>Entire Meeting (includes field trip)</b>					
Early Bird	May 8, 2009	\$125	\$150		_____
On-site	June 10, 2009	\$150	\$175		_____
<b>Field Trip Only—Anyone</b>				\$75	_____
<b>Wednesday Only—Technical Sessions</b>				\$50	_____
<b>Friday Only—Business Meeting and Technical Session</b>				\$50	_____
<b>Student Registration (University : _____)</b>				\$20	_____

**Additional tickets, with one registered participant, may be purchased for guests/spouse/children at the following rates:**

Thursday dinner (Adult)	# _____	@ \$35	_____
Thursday dinner (Child)	# _____	@ \$15	_____
Vegetarian dinner requested	# _____		_____

( For selected items, indicate the number needed)

**Total Enclosed** \$ \_\_\_\_\_

**Please enclose payment with your registration form and return to:**

**Mail checks and forms to: Alabama Chapter of SWCS  
 c/o Andrew Price  
 P. O. Box 116  
 Auburn, AL 36830**

Make checks payable to: **Alabama Chapter of SWCS**